

Procedure Card

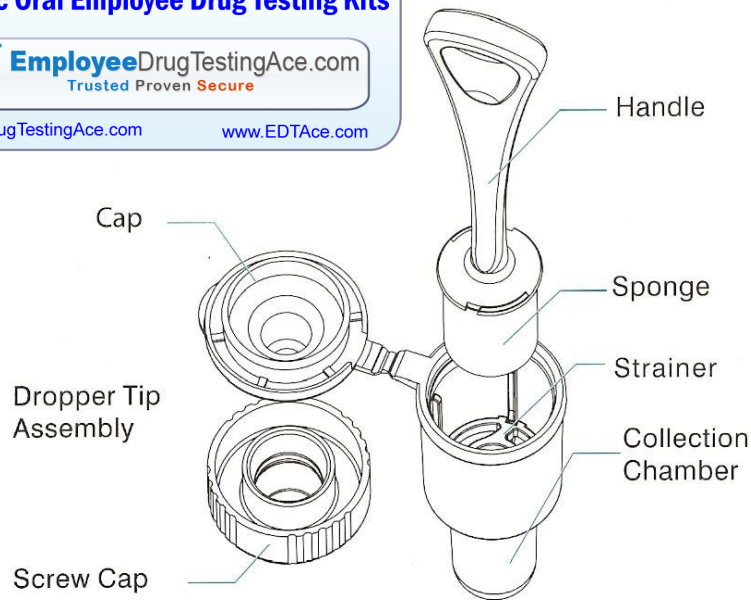
Learn More About

Generic Oral Employee Drug Testing Kits

EmployeeDrugTestingAce.com
Trusted Proven Secure

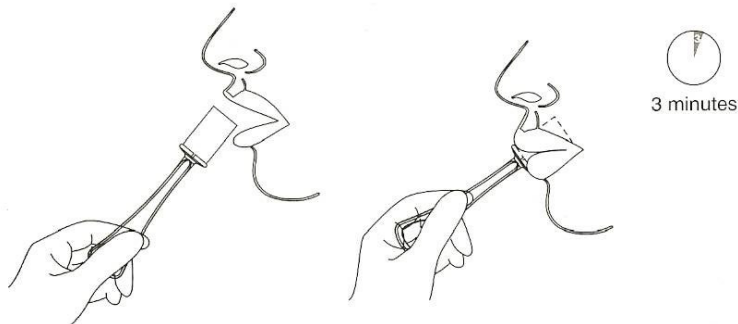
www.DrugTestingAce.com

www.EDTAce.com



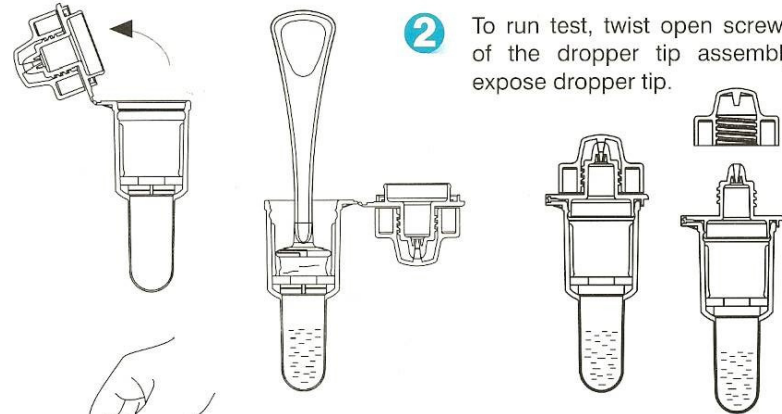
Oral Fluid Collection Procedure

- 1 Remove the collector from sealed pouch and insert the sponge end of the collector into mouth.
- 2 Actively swab the inside of the mouth and tongue to collect oral fluid for a total of 3 minutes until the sponge becomes fully saturated.
- 3 Gently pressing the sponge between the tongue and teeth will assist saturation. No hard spots should be felt on the sponge when saturated.
- 4 Remove collector from mouth.

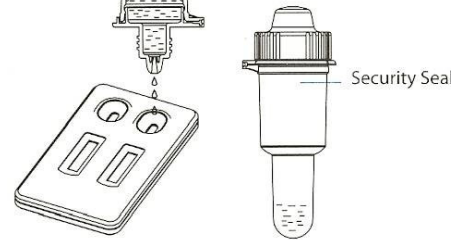


Oral Fluid Testing Procedure

- 1 Flip open the cap of the oral fluid collection chamber (do not twist open cap of collection tube at this time).
Place saturated oral fluid collector into tube and press sponge fully against strainer to collect oral fluid. Discard the collector.



- 3 Invert the collection chamber and transfer 3 drops of oral fluid into each sample well of the test device.
Place screw cap back onto collection chamber with leftover oral fluid. Apply security seal over screw cap.



- 4 Read results at 10 minutes. Do not read results after 1 hour.
- 5 Any positive result obtained with this oral fluid test must be confirmed by another test method such as GC/MS analysis. Send in sealed collection chamber with leftover oral fluid to laboratory for confirmation.

